



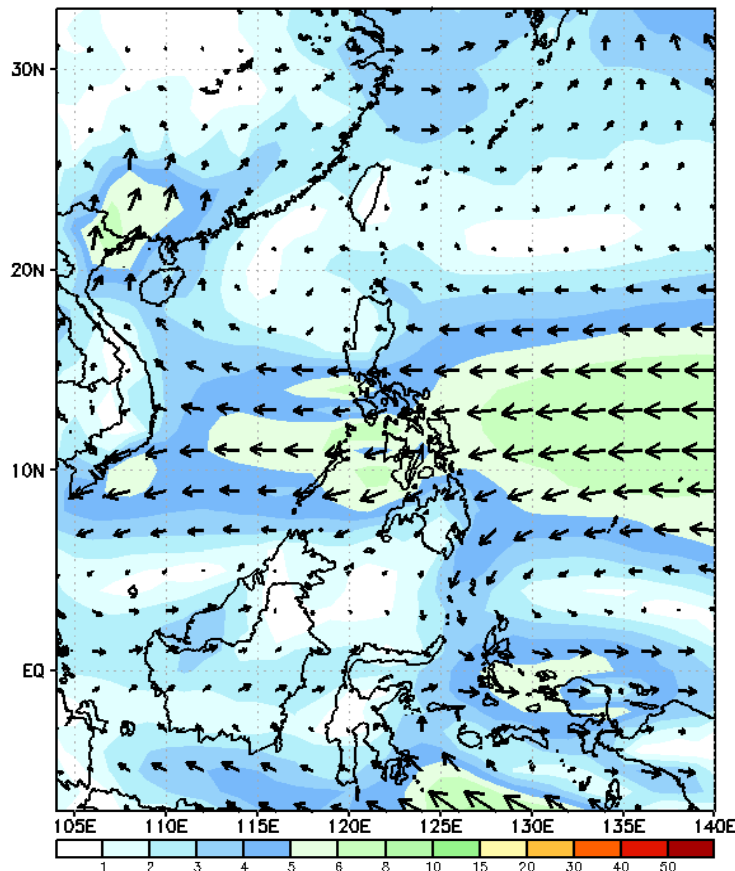
Week 1 & Week 2 Forecast for the Philippines using GEFS Model



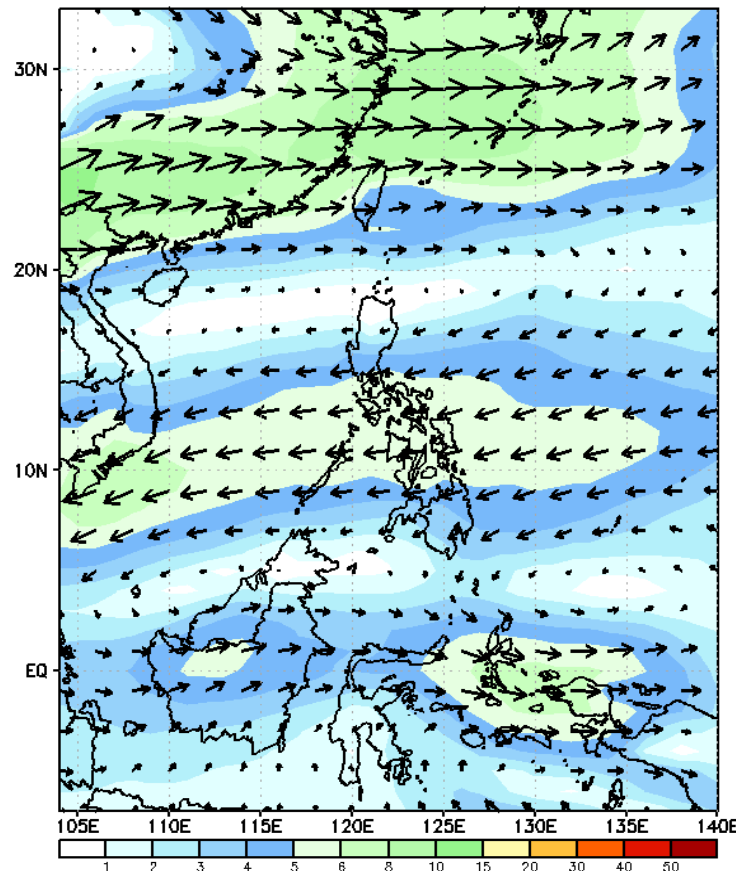
GEFS Week-1 Wind Forecasts:

Week 1: May 03-09, 2024

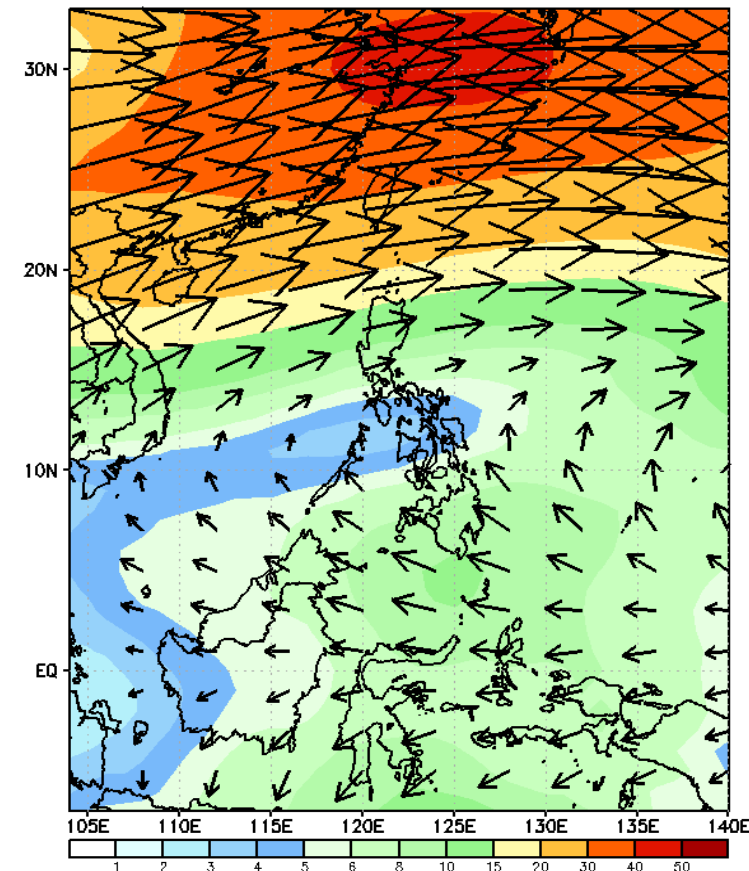
GEFS Week-1 850-hPa Wind Total
Valid: 20240503 - 20240509



GEFS Week-1 700-hPa Wind Total
Valid: 20240503 - 20240509

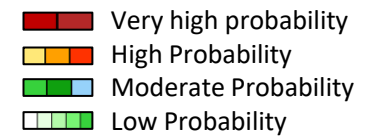


GEFS Week-1 200-hPa Wind Total
Valid: 20240503 - 20240509



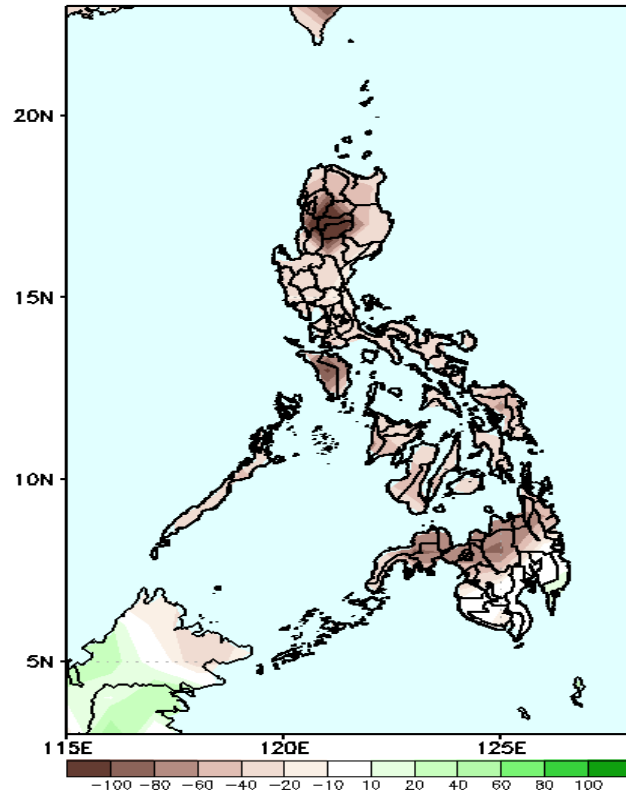
Easterlies continuously affect most parts of the country. Expect dry and warm days during the forecast period.

Precipitation Anomaly and Exceedance Probability > 25/50 mm



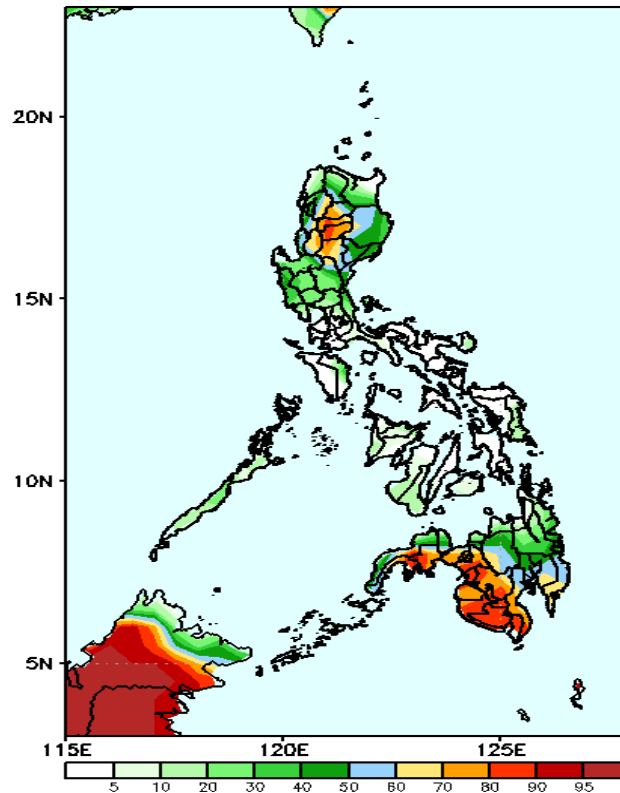
Week 1: May 03-09, 2024

GEFS Week-1 Precip Anomaly
Valid: 20240503 - 20240509



Rainfall deficit of 40-100mm is expected in CAR;
40-80mm in most parts of the country

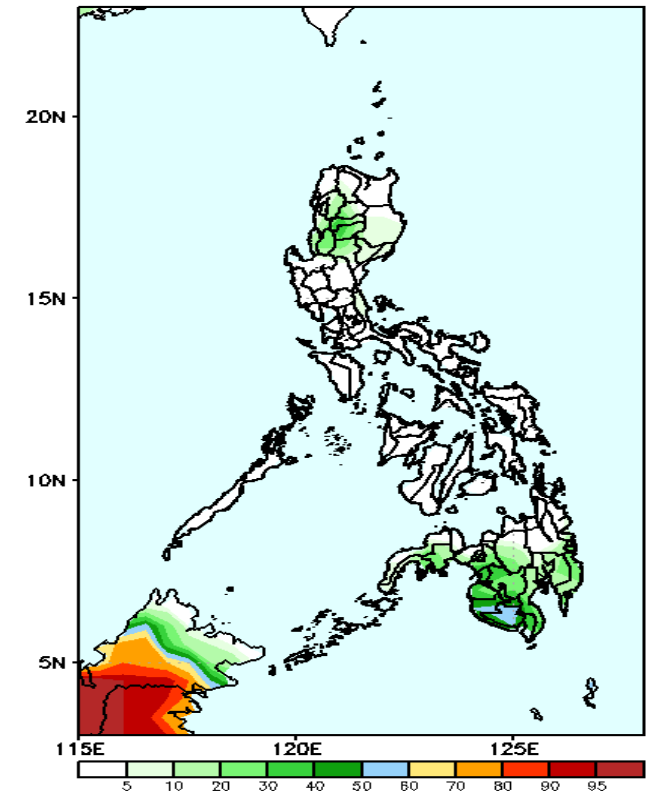
GEFS Week-1 Exceedance Prob. > 25mm
Valid: 20240503 - 20240509



Probability to Exceed 25mm

- Moderate to high over most of CAR, La Union, Nueva Vizcaya and south and western sections of Mindanao;
- Low to moderate over the rest of Luzon and Mindanao;
- Low over Visayas.

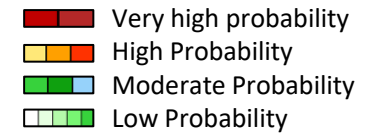
GEFS Week-1 Exceedance Prob. > 50mm
Valid: 20240503 - 20240509



Probability to Exceed 50mm

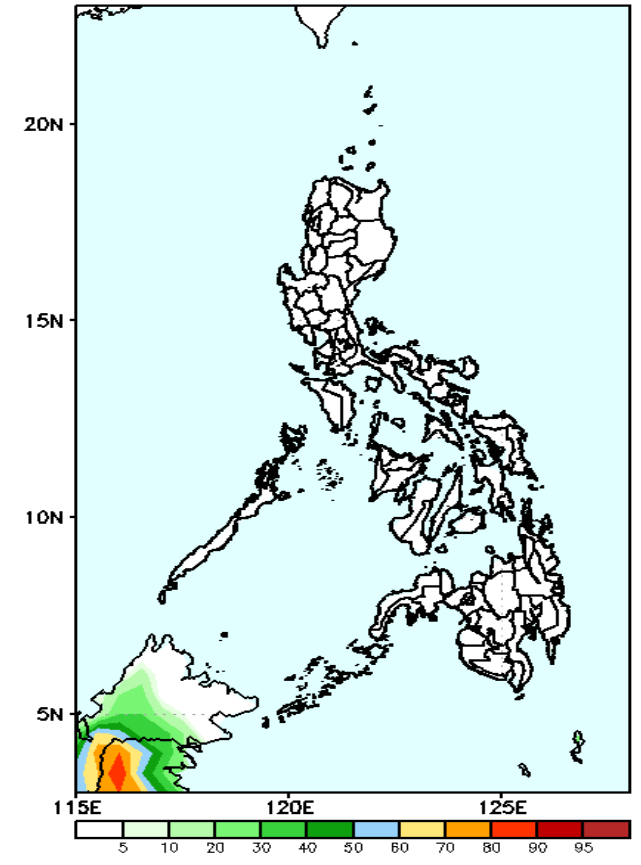
- Low to moderate over southern Mindanao;
- Low over the rest of the country.

Exceedance Probability > 100/150/200 mm



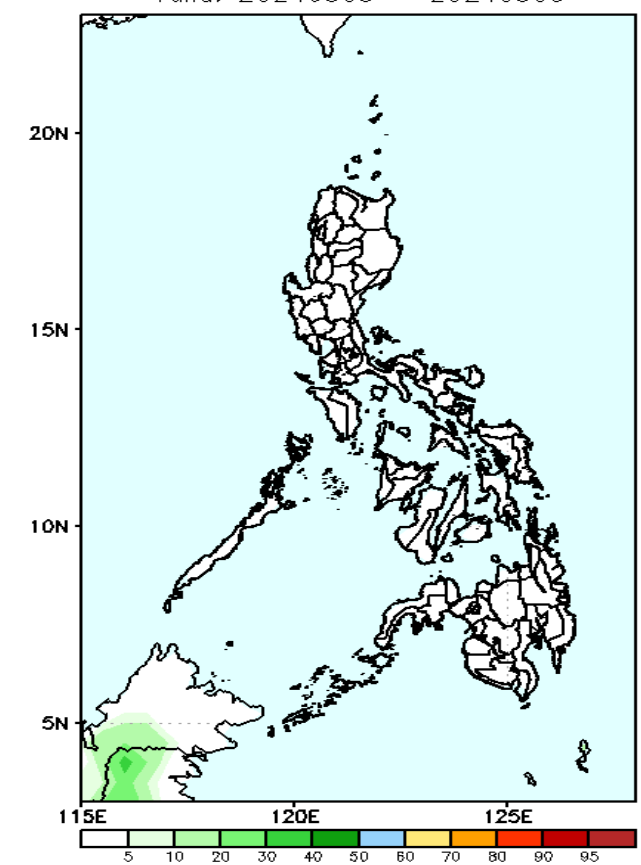
Week 1: May 03-09, 2024

GEFS Week-1 Exceedance Prob. > 100mm
Valid: 20240503 - 20240509



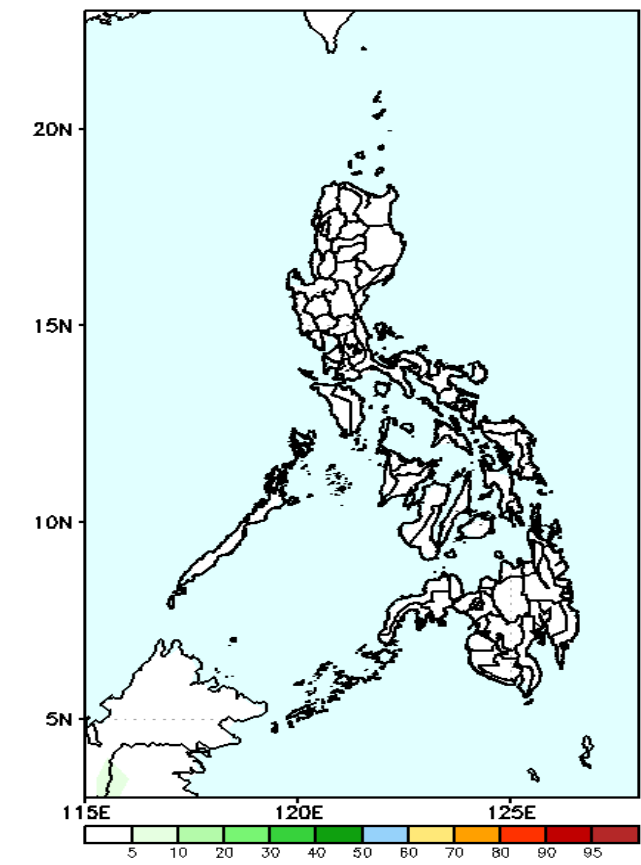
Probability to Exceed 100mm
• Low across the country.

GEFS Week-1 Exceedance Prob. > 150mm
Valid: 20240503 - 20240509



Probability to Exceed 150mm
• Low across the country.

GEFS Week-1 Exceedance Prob. > 200mm
Valid: 20240503 - 20240509

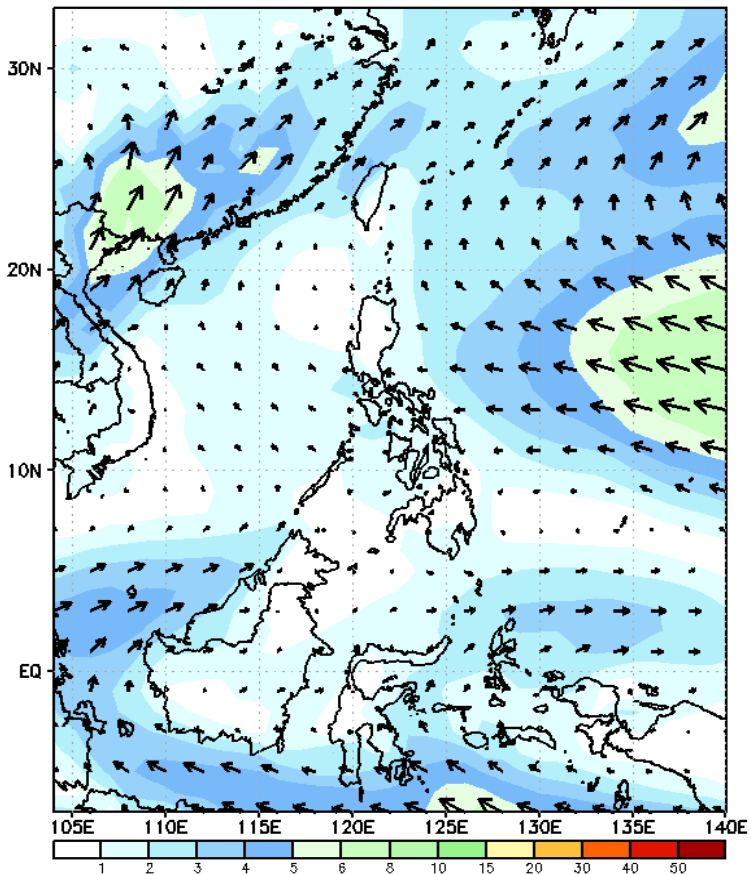


Probability to Exceed 200mm
• Low across the country.

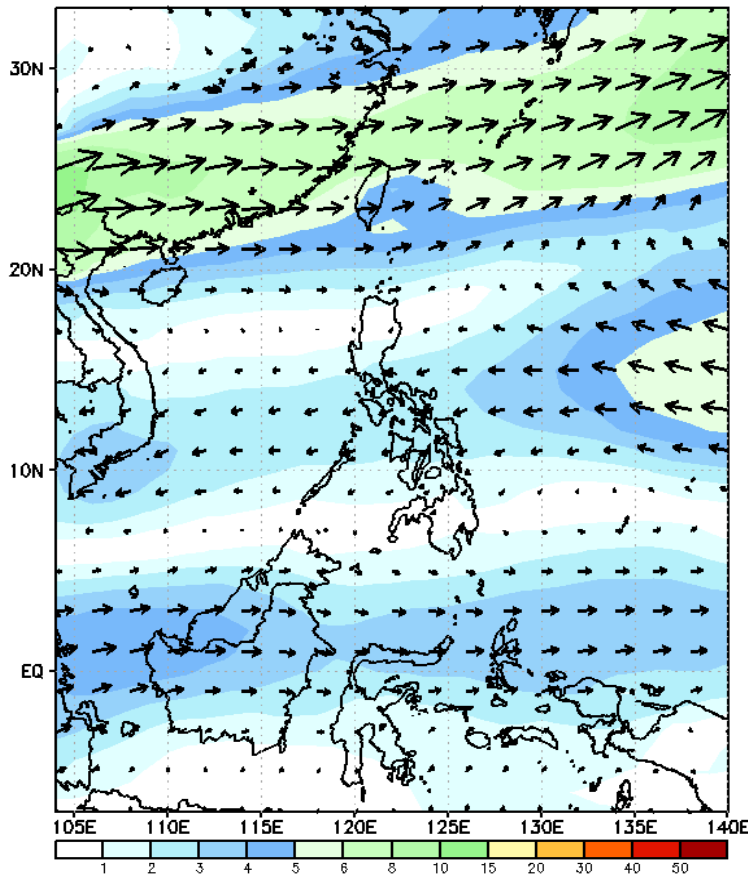
GEFS Week-2 Wind Forecasts:

Week 2: May 10-16, 2024

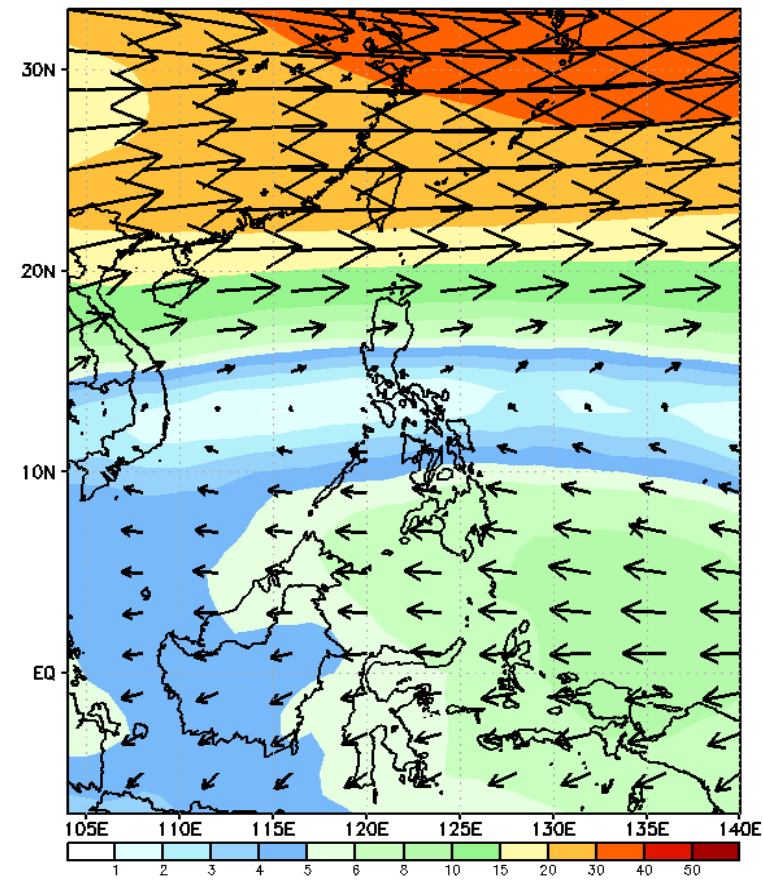
GEFS Week-2 850-hPa Wind Total
Valid: 20240510 - 20240516



GEFS Week-2 700-hPa Wind Total
Valid: 20240510 - 20240516

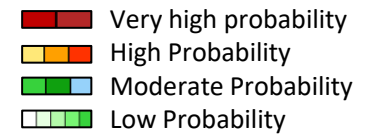


GEFS Week-2 200-hPa Wind Total
Valid: 20240510 - 20240516



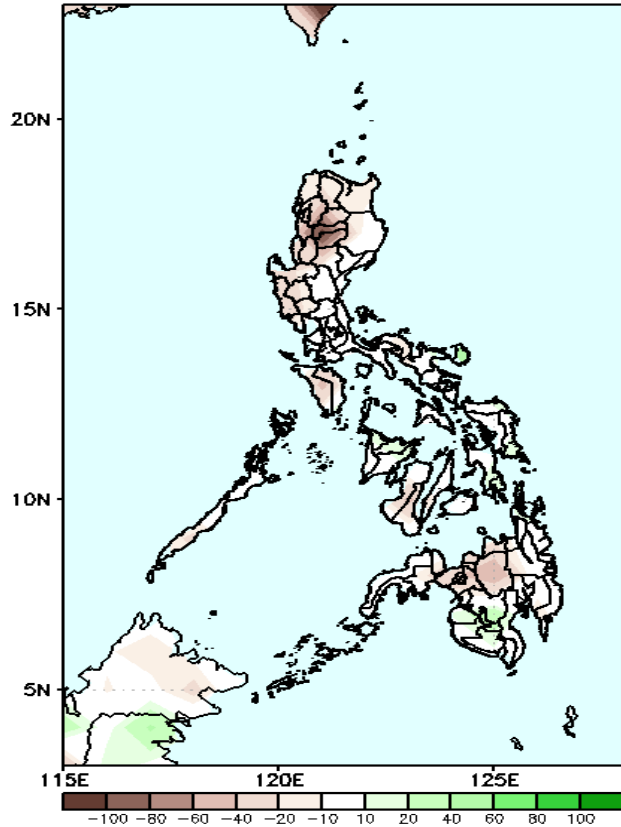
Easterlies will likely prevail in most parts of the country. Expect dry and warm days during the forecast period.

Precipitation Anomaly and Exceedance Probability > 25/50 mm



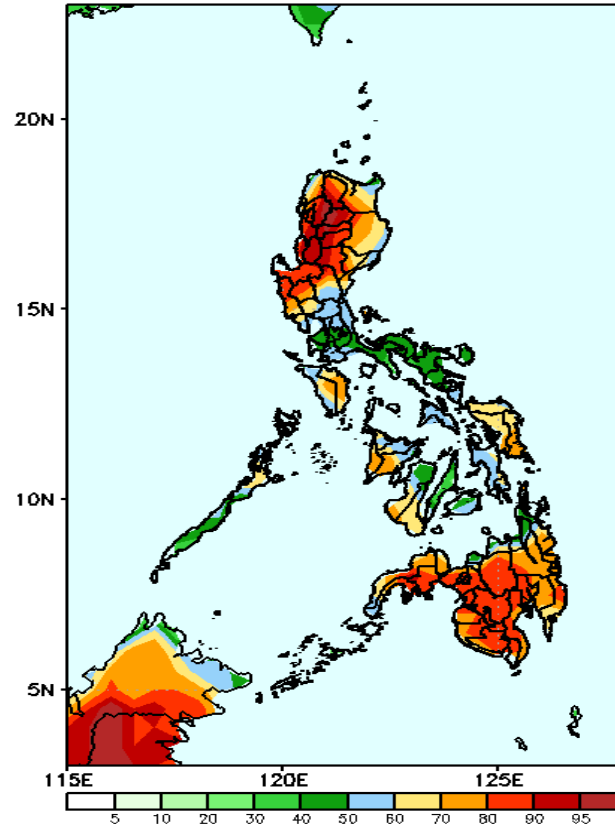
Week 2: May 10-16, 2024

GEFS Week-2 Precip Anomaly
Valid: 20240510 - 20240516



Rainfall deficit of 20-70mm is expected in most parts of the country.

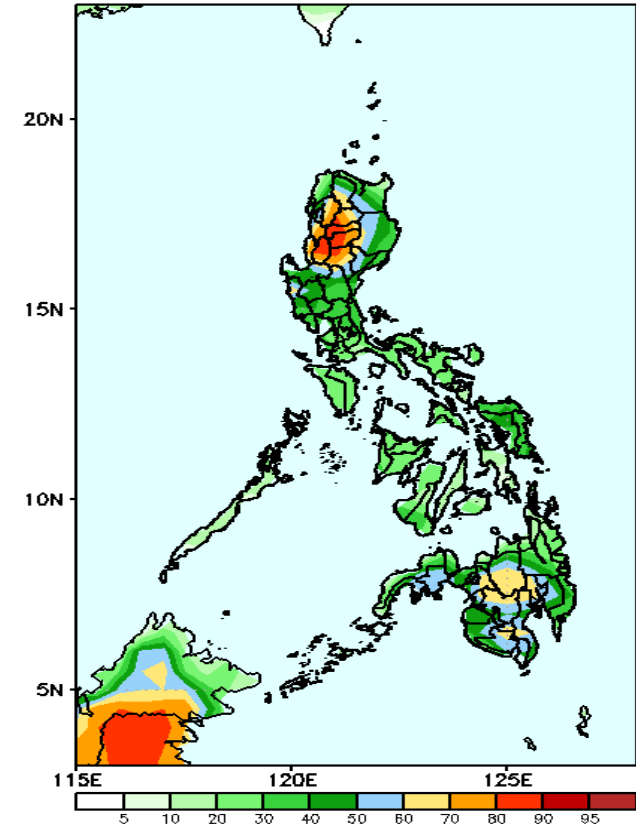
GEFS Week-2 Exceedance Prob. > 25mm
Valid: 20240510 - 20240516



Probability to Exceed 25mm

- Moderate to high over Northern and Central Luzon, Mindoro provinces, Antique, Negros provinces, Samar provinces and most parts of Mindanao;
- Low to moderate over rest of the country.

GEFS Week-2 Exceedance Prob. > 50mm
Valid: 20240510 - 20240516



Probability to Exceed 50mm

- Moderate to high over most parts of CAR, La Union, Nueva Vizcaya and central Mindanao;
- Low to moderate over the rest of the country.

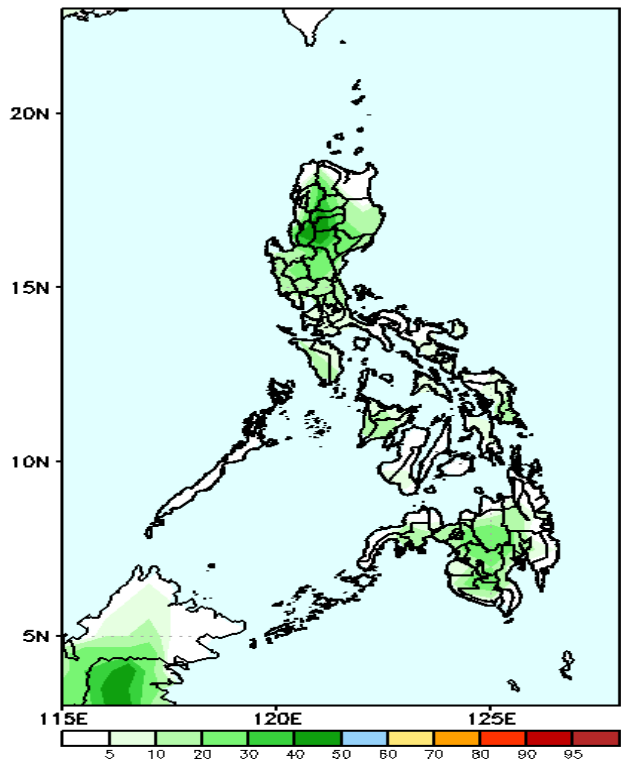


Exceedance Probability > 100/150/200 mm

- Very high probability
- High Probability
- Moderate Probability
- Low Probability

Week 2: May 10-16, 2024

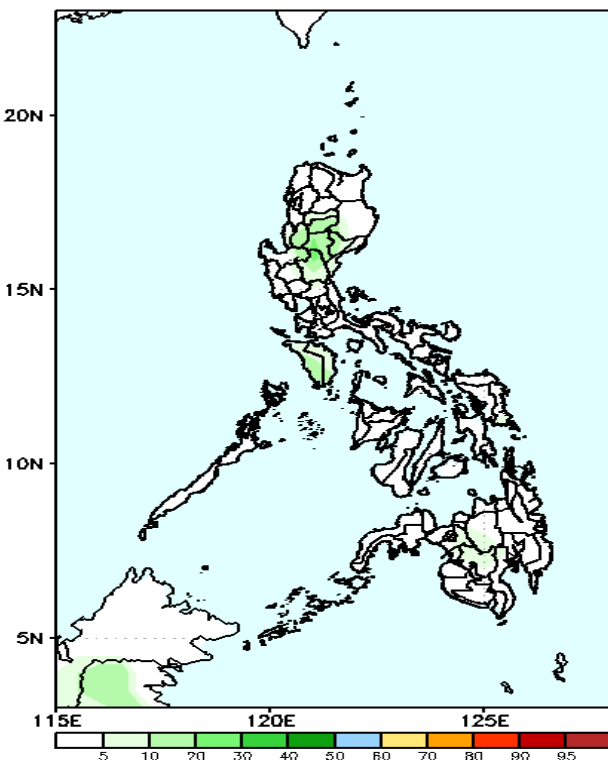
GEFS Week-2 Exceedance Prob. > 100mm
Valid: 20240510 - 20240516



Probability to Exceed 100mm

- Low across the country.

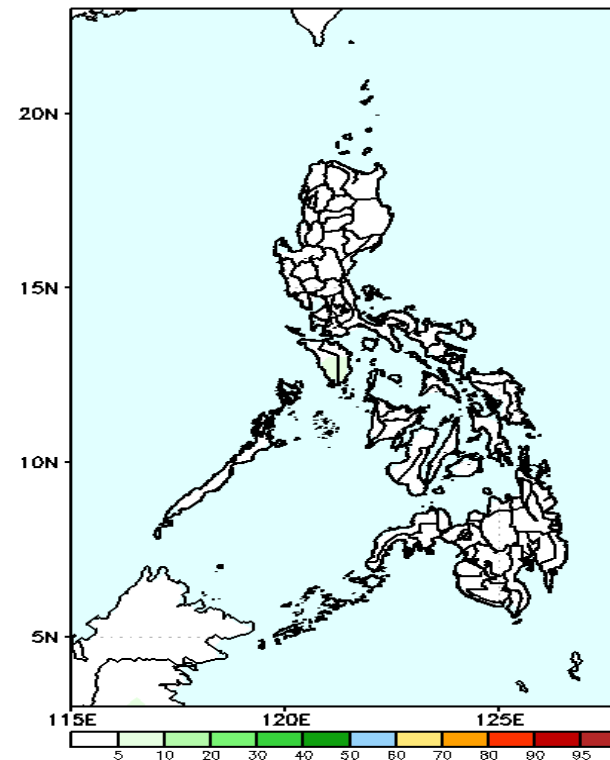
GEFS Week-2 Exceedance Prob. > 150mm
Valid: 20240510 - 20240516



Probability to Exceed 150mm

- Low across the country.

GEFS Week-2 Exceedance Prob. > 200mm
Valid: 20240510 - 20240516

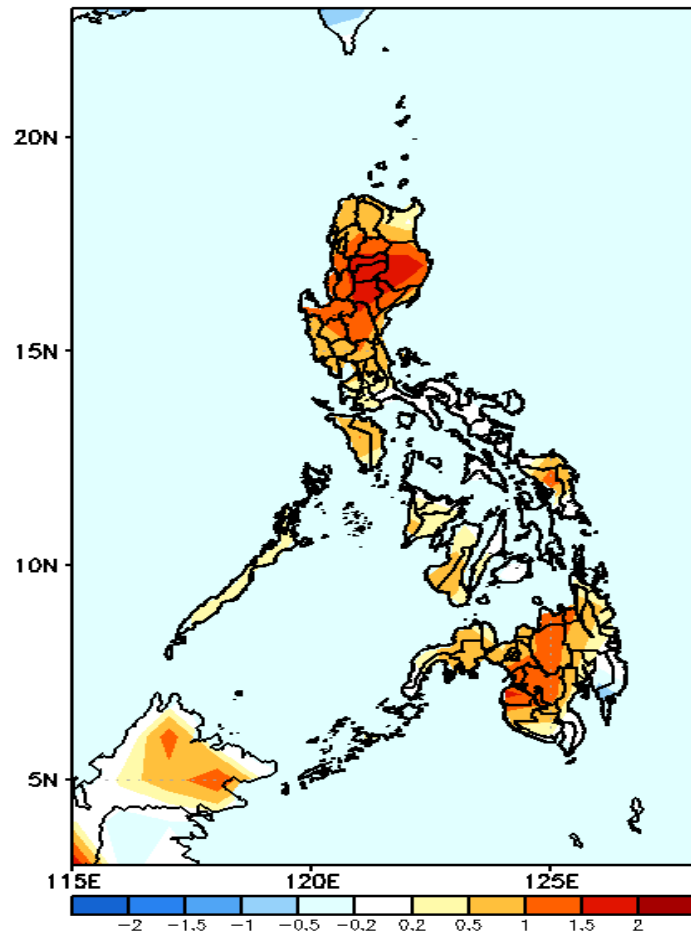


Probability to Exceed 200mm

- Low across the country.

GEFS Week-1 & 2 Forecasts: T2m Anomaly

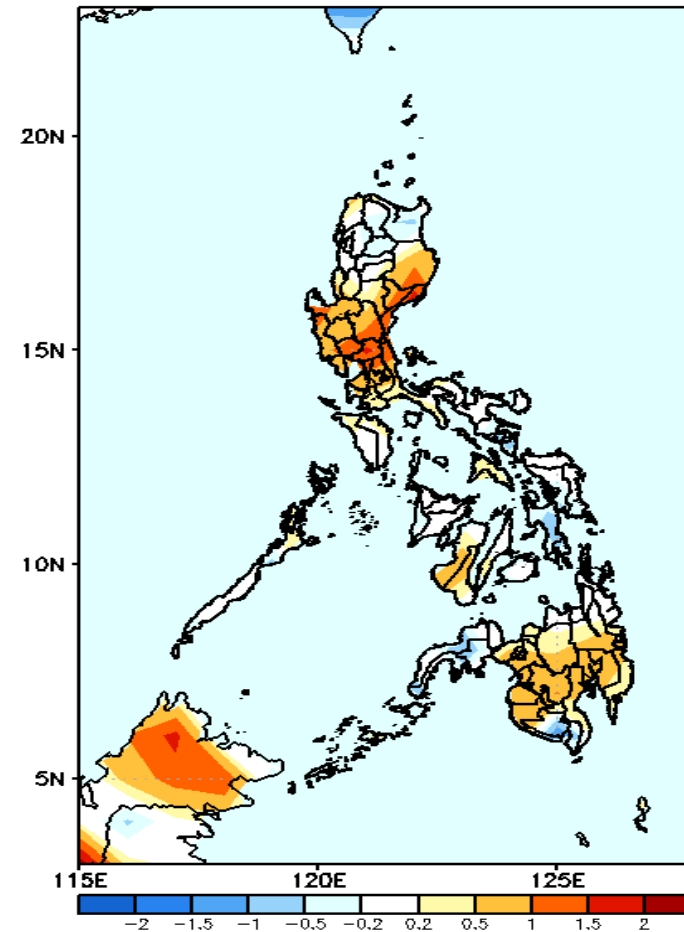
GEFS Week-1 T2m Anomaly
Valid: 20240503 - 20240509



2m Temperature Week 1: May 03-09, 2024

Slightly warmer to warmer than average surface air temperature will likely be experienced in most parts of the country except in Bicol Region, central Visayas, Leyte provinces and Davao where near average temperature is expected.

GEFS Week-2 T2m Anomaly
Valid: 20240510 - 20240516



2m Temperature Week 2: May 10-16, 2024

Slightly warmer to warmer than average surface air temperature will likely be experienced in most parts of Luzon and Mindanao while near to slightly cooler than average surface air temperature is expected in extreme northern Luzon, Mindoro, Bicol Region, most parts of Visayas, Zamboanga Peninsula and South Cotabato